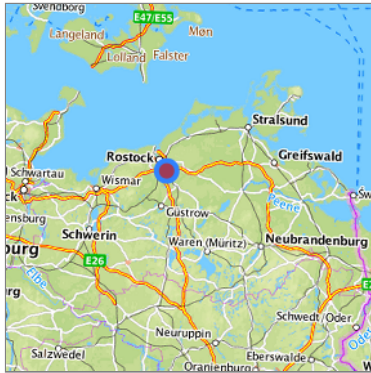
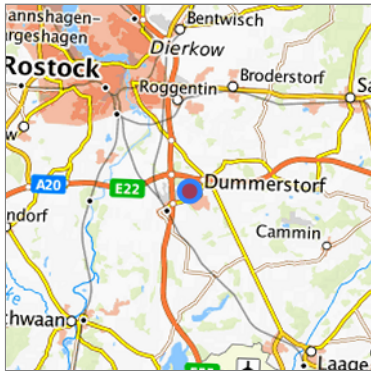


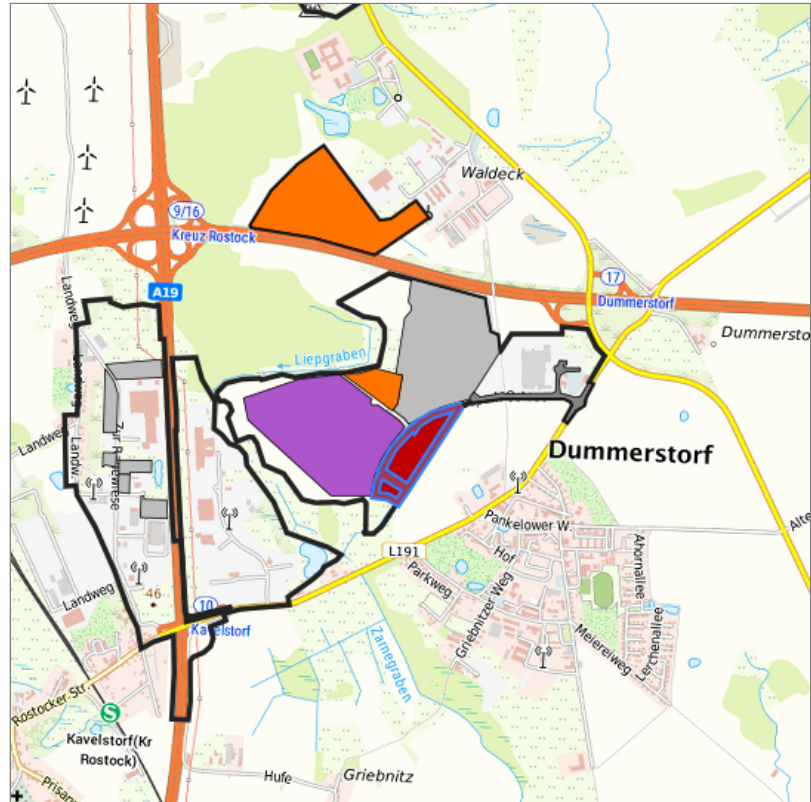
Industrie- und Gewerbepark Autobahnkreuz Rostock (Fläche 3) at Dummerstorf, Landkreis Rostock



Location in Mecklenburg-Vorpommern










Location in the requested region



Detailed view of the requested site

Legend

Availabilities

 Immediately	 short term (2 years)	 medium term (2-5 years)
 long-term (> 5 years)	 optional area (bindingly reserved)	 occupational pension plan
 not available		

Brief description

Description of the parcel	Industrie- und Gewerbepark Autobahnkreuz Rostock
Municipality/city	Dummerstorf
Description of the commercial zone	<p>The location of the Rostock motorway junction industrial and commercial park in the immediate vicinity of the A 20 motorway slip road and the A 19/A 20 motorway junction creates excellent transport links to the Rostock seaport and the major cities of Rostock, Hamburg, Berlin and Szczecin. The area is currently being overplanned; the development plan for the 1st construction phase is legally binding. Due to the proximity to the town of Dummerstorf, the external development of the area with electricity, heat and water/wastewater is available.</p> <p>The municipality of Dummerstorf with its 7,100 inhabitants is located about 10 km south-east of the Hanseatic city of Rostock, the most important industrial and commercial centre in Mecklenburg-Western Pomerania. Due to its excellent transport connections, the municipality has several industrial estates and is home to the Research Institute for the Biology of Farm Animals (FBN).</p>

Parcel

Property size (m ²)	69,086.86
Space can be parcelled freely	Yes
Availability	immediately available

Type and extent of building and land use

Specific type of structural use	GE
Development situation	partially accessible

Transport accessibility

Motorway	A 20 Lübeck-Stettin	0.5 km
Motorway	A 19 Rostock-Berlin	2.0 km
Regional airport	Fughafen Rostock-Laage	20.0 km
Port	Seehafen Rostock	20.0 km

Availability of public
transport

Available

Contact

Tomas Kämpfert
Gemeinde Dummerstorf - Wohnungsgesellschaft Dummerstorf mbH
Griebnitzer Weg 2
18196 Dummerstorf
[+49 38208 61903](tel:+493820861903)
[+49 171 8134225](tel:+491718134225)
tomas.kaempfert@wg-dummerstorf.de
<https://www.dummerstorf.de>

Martin French
Wirtschaftsförderung Landkreis Rostock GmbH
Referent Wirtschaftsförderung / Senior Consultant
August-Bebel-Str. 3
18209 Bad Doberan
[+49 3843 755-61103](tel:+49384375561103)
[+49 151 18487802](tel:+4915118487802)
martin.french@lkros.de
www.w-lr.de